

T4i engineering provides solutions and services in the areas of chemical detection, specialised electronic design and materials science. Company core innovation is the design of modular, miniaturised and adaptive detectors. We are a group of engineers and experts with experience in electronics design and materials science. We exploit the power of advanced design, miniaturisation and prototyping for delivering state-of-the-art solutions. T4i engineering have experience that ensures high quality project management and risk analysis for R&D projects.



Contact Us

+44 (0) 208 144 2021
+30 210 994 0383

info@t4ieng.com

Loughborough University Science
and Enterprise Park
5 Oakwood Drive, Loughborough
Leicestershire, LE11 3QF
United Kingdom
&
Ergaton Typou 10
16346, Ilioupoli
Athens, Greece



Find more at
www.t4ieng.com



Extraordinary design

Robust engineering

Technology made simple

Integration

We adapt our prototypes for use in different detection platforms for enhancing monitoring capabilities in DIM operations and industrial inspections.

T4i DOVER®: Versatile, robust, miniaturised, IoT-by-design chemical detector for mounting on-board robotics and UAVs.

T4i SMS: Fast, dynamic, miniaturised sampling system and fast, LTM GC in one unit. Ideal for hyphenation with PID, IMS, MS.

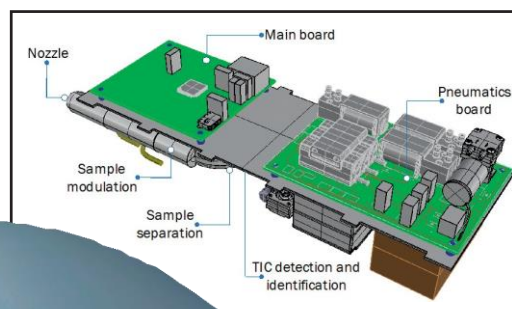
T4i FemtoMachine®: Unique, handheld vapour generator that transforms calibration and testing of chemical sensors and detectors.



Electronic boards design

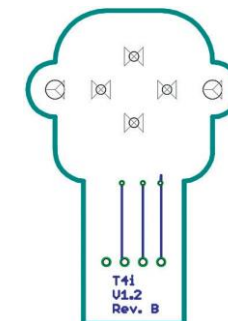
T4i engineering provide electronics design services based on our experience in embedded electronics, incorporating a variety of transducers, interface communication protocols and microcontrollers.

Our team of engineers specializes in hybrid systems that fuse electronics and miniature low power pneumatic components, as well as, chemical or other sensors.



Questioning the reliability of field chemical data

Measuring chemicals in the field in emergency situations but also in air quality monitoring has big challenges originating from meteorology, topography, types of sources of chemical emissions and chemical plumes and the needs for QA/QC in the field. With innovative design and robust engineering we deliver solutions that eliminate the impact of those factors and provide reliable real-time measurements.



Operational needs-driven solutions

Solving operational problems starts by addressing at the very beginning issues of demands for on-site use, simplicity in operation of the field device and the need of on-site calibration. We have developed

T4i DOVER® for use on-board drones, a "flying detector" for toxic chemicals and the unique field calibrator T4i FemtoMachine® for chemical detectors. These products are deeply rooted in miniaturisation, integration, QA/QC in the field and technology made simple that transform the chemical detector from a simple sensor to a fully advanced field chemical instrument that can be calibrated anywhere anytime.